



Burson

Conductor 3 (C3R)

Headphone Amplifier / Pre Amplifier / USB DAC

User Manual

Register for warranty Ref. page 8 for details

Thank You.

All of us at Burson Audio would like to thank and congratulate you for purchasing the Burson Conductor 3R. We sincerely believe that your new Burson Conductor 3R is an intelligent investment and that it will bring you many years of musical enjoyment and satisfaction.

We understand how eager you are to begin listening but before you start we want you to become familiar with the full capabilities of the Burson Conductor 3R. Before powering the device, we encourage you to look through the manual.

Our Philosophy

The less the equipment tampers with the music, the greater the purity and musical enjoyment become. This has been the core design philosophy of Burson Audio since 1996. If the equipment is honest and transparent, then the tempo, dynamics and tone will materialize as a natural expression of the music and it becomes unnecessary to ‘flavor’ the original sound. We believe that this ideal can never be achieved through the use of standard circuitry building blocks such as opamps, IC regulators or even standard transformers. Instead, we work towards this ideal through the research and development of customized solid-state circuitries that are developed specifically to suit our applications, with each and every component be pushed to their performance peak. Only then will the end result be consistent with our philosophy and standards.

Team Burson

Unpacking

After carefully unpacking your Burson Conductor 3R, inspect for any shipping damage and call your dealer immediately if any is found. Do not plug your Burson Conductor 3R into any outlet if you find shipping damage. Please save all packing materials so the unit can be easily and safely shipped if the need arises.

The Package

- Conductor 3R Pre Amp / DAC
- External Power Supply 24V 3A
- USB Data cable
- Remote control unit
- Hex Key / Spare Fuse / Spare IC opamps for troubleshooting

Basic Setup

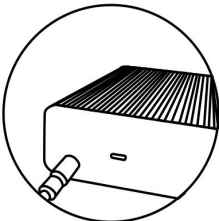
Four Easy Steps to Setup Your Burson

1



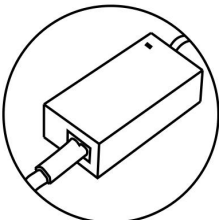
Scan this QR code or visit the link below to download your user manual and warranty registration instructions:
www.bursonaudio.com/downloads/

2



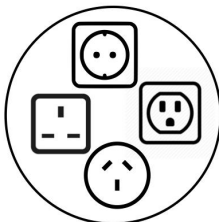
Plug the 24V barrel plug into the Burson.

3

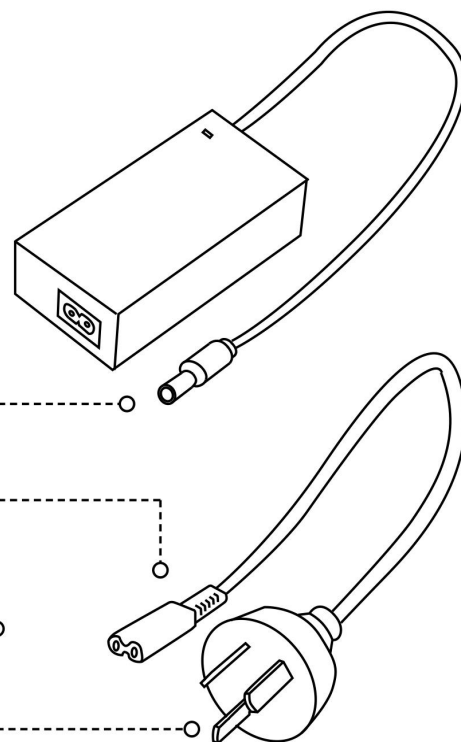


Connect the figure 8 power cable to the power supply.

4



Plug the power cable into your wall socket and power up your Burson.



Connections



USB interface software setup guide.

When connecting the Conductor 3R to OSX, iOS or Android systems, no driver is needed.

For use with Windows OS, a driver is required. You can download a driver from our website:

<https://www.bursonaudio.com/downloads/>

Please download the latest Windows driver: [Burson_UsbAudio_v4.59.0_2019-04-02_setup.exe](#)

Break-in, Warm-up and Caring.

The sound of the Burson Conductor 3R improves steadily within minutes after powered-up. Depending on the resolution of the system and the attentiveness of the listener, you may find that the sound continues to improve over the first weeks of operation.

Never connect or disconnect the RCA or XLR output cables from the Conductor 3R while music is playing. This could damage the Conductor 3R. Please stop the music source before disconnecting.

Menu Items

Input	USB	PCM 32bit 786K / DSD512
	Toslink	PCM 24bit 192K
	Coaxial	PCM 24bit 192K
	Bluetooth	PCM 24bit 96K
	RCA 1 & 2	RCA Line-level Input
Output	Pre Out	Pre Amp output with volume control
	DAC Out	2V RMS line-level No volume control
	HP Out	Headphone Output
Gain Level	High* / Med / Low	High / Med / Low
FIR Filter	Brickwall, CMFR, Reserved, AP Fast*, MP Slow, MP Fast, LP Slow, LP Fast	See FIR Filter section below
DPLL (DSD)	DPLL Off / Low / Mid / High*	DSD file playback setting
DPLL (PCM)	DPLL Off / Low / Mid / High*	PCM file playback setting
DE-EMPHASIS	On / Off*	Only turn on if your source is a cassette tape player
RESTORE SETTINGS	YES / NO	This resets the unit back to default factory settings

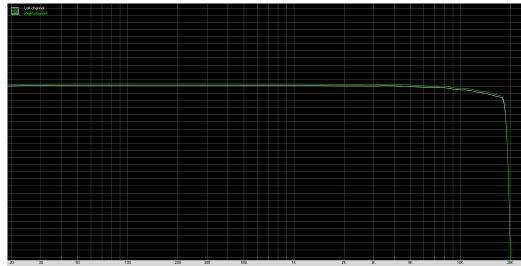
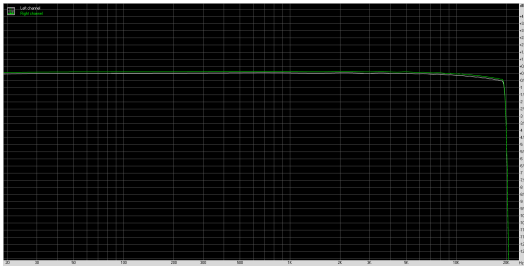
Default selection marked with*

Changing Menu Items

- To change the menu item settings press the Menu button to access the Menu.
- Use the rotary Volume control to scroll through the menu items.
- Select a Menu item by pressing the Volume dial inwards.
- Additional choices can be made using the scroll and select function of the Volume dial.
- Press the Menu button to remember the setting and escape from the Menu.

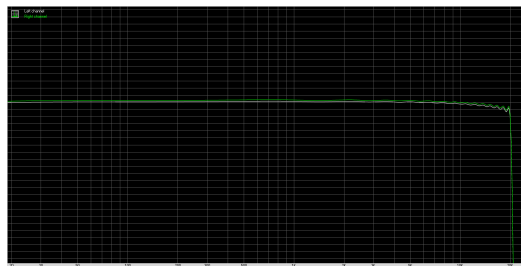
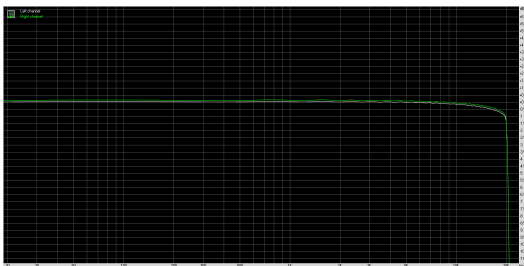
FIR Filters

See a visual representation of the various FIR filter settings below.



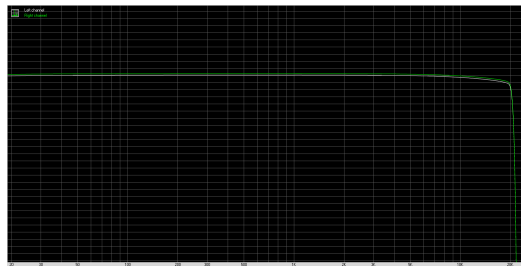
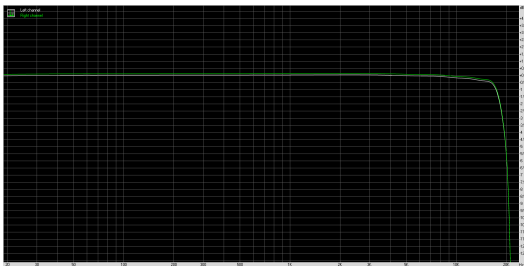
Break Wall

CMFR



Reserved

AP Fast



MP Slow

MP Fast



LP Fast

LP Slow

FIR Filters are part of the digital process built in the DAC chip. These filter settings mainly affect high-frequency roll-offs usually in the 18kHz and above frequency range. The effect of the filter settings is very subtle and may not always be audible.

Opamp Rolling Must-Knows

In the user manual, we have zoned the opamps by their application. ie I/V stage, L/P stage, or buffer stage and volume control stage.

When changing opamps, you must change both within the same "zone" together.

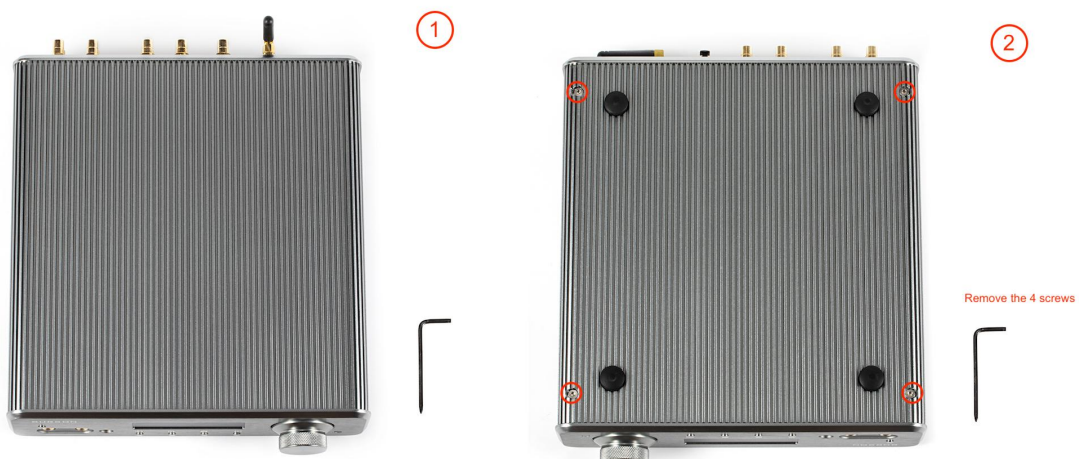
For example, if you want to change I/V stage opamps from its default Burson Vivids to Burson Classics, both opamps in the I/V stage must change simultaneously.

Non-compliance with the above procedure could risk your audio system and will void our warranty.

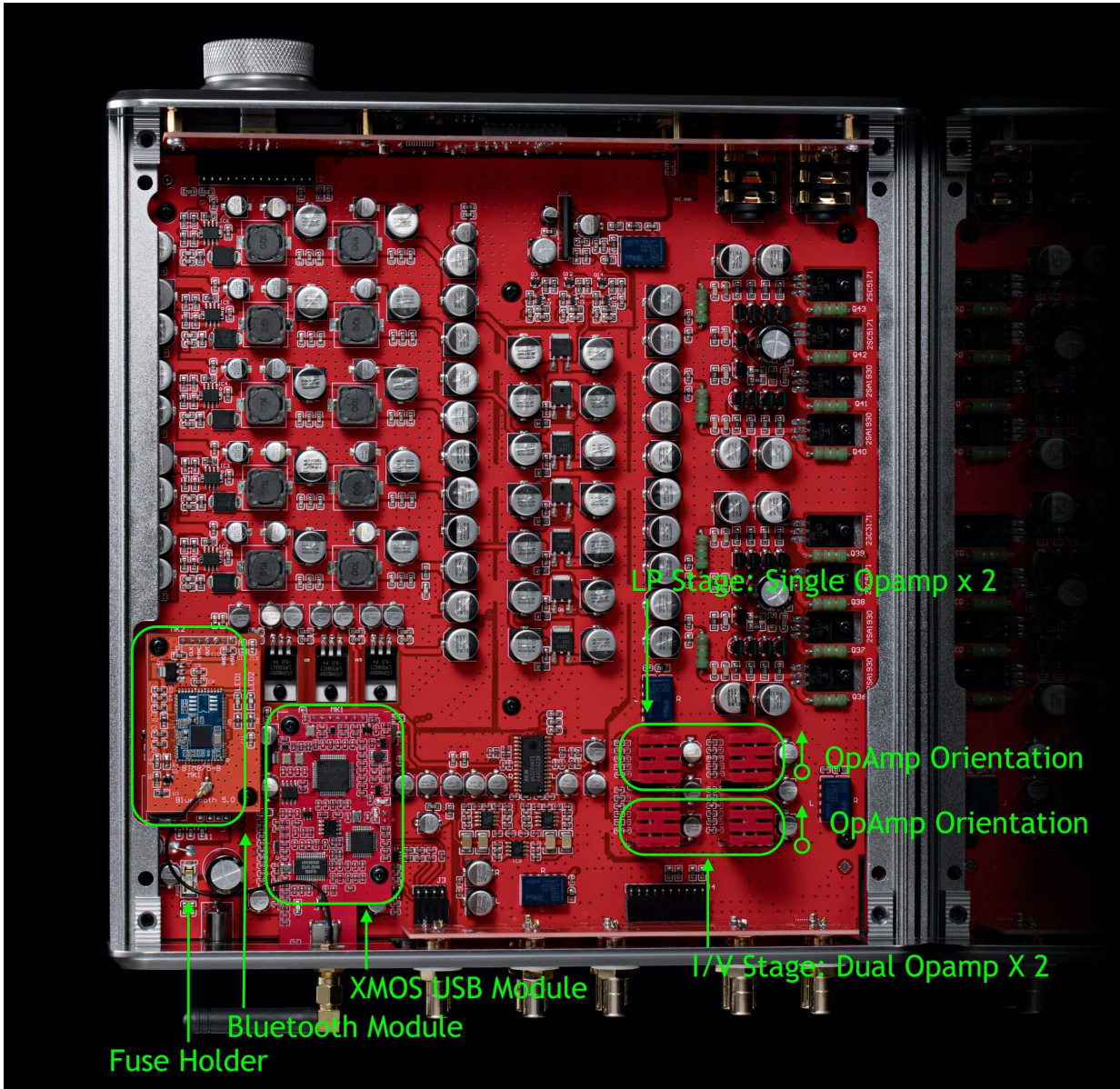
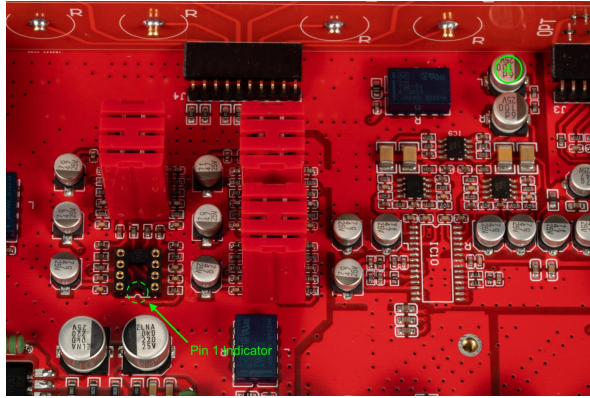
Opamp Change & Upgrade

The Burson Conductor 3R allows opamp changing to customise its sound to the owner's preference. When changing opamps, please be aware of the following:

1. The opamp power supply voltage in the Burson Conductor 3R is +/-15V. Always remove the power supply before opening up the unit.
2. There are **2 dual and 2 single opamps** inside the Conductor 3R.
3. Please refer to the following diagram for the position and correct orientation of the opamps. The notch at the top of the opamp indicates the orientation of the opamp within the socket. Match it to the existing opamp.
4. The case can be opened by removing 4 hex screws at the bottom of the case. Use the supplied hex key.



3



The Initial Powering up

Make sure volume control has been turned to minimal when using your Conductor 3R for the first time. Always power on your source machine first and your power amp last. When powering down your system reverse these steps.

To select the Source - Rotate the Volume dial until the desired input is shown and press inwards to Select.

Free Warranty Extension

All Burson Audio products are covered by 24 months + 12 months of warranty (See conditions below).

<https://www.bursonaudio.com/warranty/>.

Warranty Conditions

Burson Audio warrants that this product shall be free from defects in materials and workmanship for The warranty period begins at the date of sale and is subject to the following requirements and understandings:

1. This is a non-transferable warranty.
2. This product is only warranted in the country of original sale by Burson / authorised dealer.
3. The product must not have been modified in any manner whatsoever, or the warranty is immediately voided.
4. The product must not have been stored in a humid, damp environment; nor subjected to weather, water, or salt spray.
5. During the warranty period, Burson will replace a defective Burson Conductor 3 with a similar available product, at no cost to the owner for labour, materials, and shipping charges from Burson.
6. Burson shall not, under any circumstances, be liable for any incidental or consequential damages arising from the loss of property or other damage or losses due to the failure of a Burson Conductor 3. Burson will not pay for loss of use or inconvenience caused by the failure of a Burson Conductor 3. Burson will not pay for damage caused to other audio components caused by the failure of the Burson Conductor 3 within the limits allowed by Australian Law.
7. The compatibility between our USB receiver and your computer is dependent on software drivers provided to Burson by the USB chip manufacturer. Therefore Burson cannot guarantee the compatibility of our USB receiver during or after the warranty period.
8. The use of XLR to RCA adaptors will void the warranty.



Warranty Registration