



Burson Funk
Headphone Amplifier / Speaker Amplifier
User Manual

Register for warranty Ref. page 7 for details

Thank You.

All of us at Burson Audio would like to thank and congratulate you for purchasing the Burson Funk. We sincerely believe that your new Burson Funk is an intelligent investment and that it will bring you many years of musical enjoyment and satisfaction.

We understand how eager you are to begin listening but before you start we want you to become familiar with the full capabilities of the Burson Funk. Before powering the device, we encourage you to look through the manual.

Team Burson

The less the equipment tampers with the music, the greater the purity and musical enjoyment become. This has been the core design philosophy of Burson Audio since 1996. If the equipment is honest and transparent, then the tempo, dynamics and tone will materialize as a natural expression of the music and it becomes unnecessary to ‘flavor’ the original sound. We believe that this ideal can never be achieved through the use of standard circuitry building blocks such as opamps, IC regulators or even standard transformers. Instead, we work towards this ideal through the research and development of customized solid-state circuitries that are developed specifically to suit our applications, with each and every component be pushed to their performance peak. Only then will the end result be consistent with our philosophy and standards.

Team Burson

Unpacking

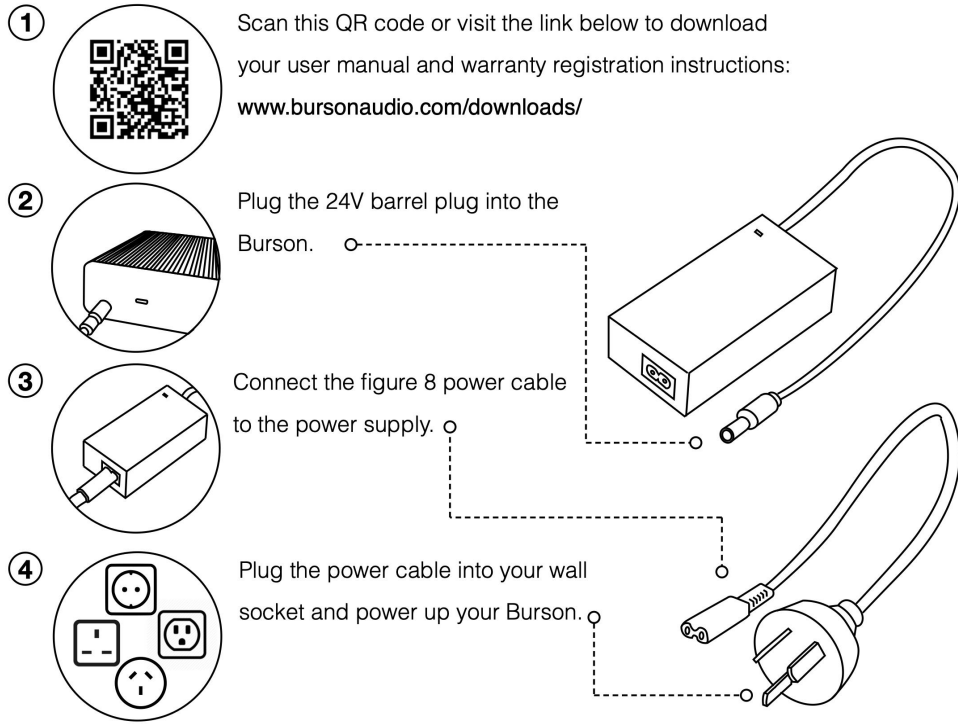
After carefully unpacking your Burson Funk, inspect for any shipping damage and call your dealer immediately if any is found. Do not plug your Burson Funk into any outlet if you find shipping damage. Please save all packing materials so the unit can be easily and safely shipped if the need arises.

The Accessories

- Funk Headphone Amp / Speaker Amp
- External Power Supply 24V 3A
- RCA Cables

Basic Setup

Four Easy Steps to Setup Your Burson



Stand Alone Setup

1. Make sure the unit is off.
2. Connect the 24V external power supply to the Funk (via the barrel socket)
3. Connect the line level source to the Funk RCA inputs.
4. Connect your headphones to the headphone socket
5. Connect your speaker to the Funk speaker outputs.
6. Power on the Funk.
7. Turn the volume control knob to adjust the volume.

Connections



Break-in, Warm-up and Caring.

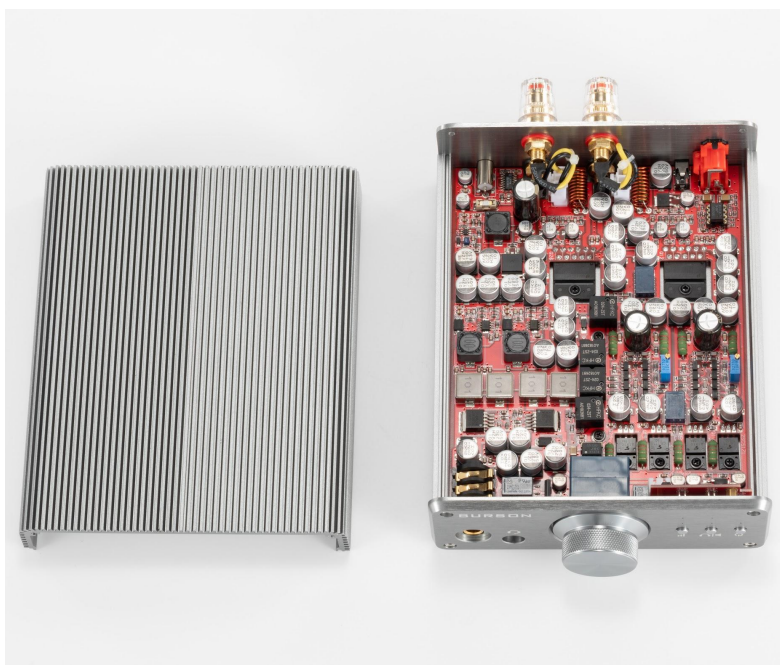
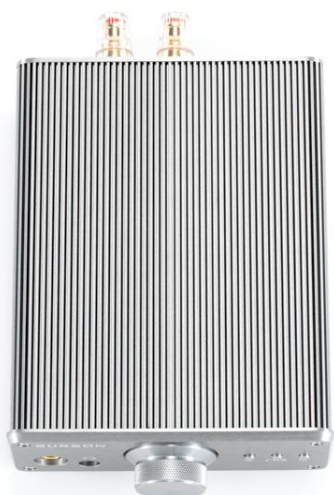
The sound of the Burson Funk improves steadily within minutes after powered-up. Depending on the resolution of the system and the attentiveness of the listener, you may find that the sound continues to improve over the first weeks of operation.

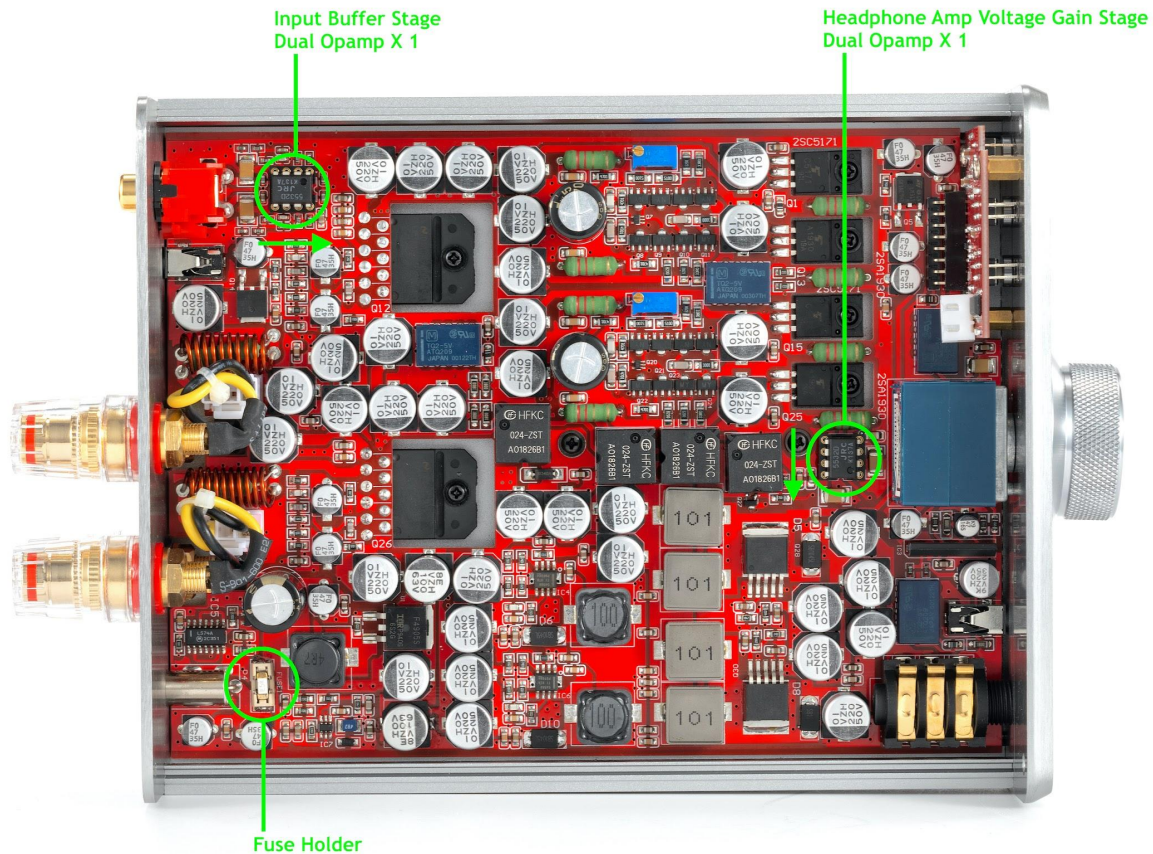
Never connect or disconnect the RCA or speaker output cables from the Funk while music is playing. This could damage the Funk. Please stop the music source before disconnecting.

Opamp Change & Upgrade

The Burson Funk allows opamp changing to customise its sound to the owner's preference. When changing opamps, please be aware of the following:

1. The opamp power supply voltage in the Burson Funk is +/-15V. Always remove the power supply before opening up the unit.
2. There are 2 dual opamps inside the Funk.
3. Please refer to the following diagram for the position and correct orientation of the opamps. The notch at the top of the opamp indicates the orientation of the opamp within the socket. Match it to the existing opamp.
4. The case can be opened by removing 4 hex screws at the bottom of the case. Use the supplied hex key.





The Initial Powering up

Make sure volume control has been turned to minimal when using your Funk for the first time. Always power on your source machine first and your power amp last. When powering down your system reverse these steps.

To select the Source - Rotate the Volume dial until the desired input is shown and press inwards to Select.

Free Warranty Extension

All Burson Audio products are covered by 24 months + 12 months of warranty (See conditions below).
<https://www.bursonaudio.com/warranty/>.

Warranty Conditions

Burson Audio warrants that this product shall be free from defects in materials and workmanship for The warranty period begins at the date of sale and is subject to the following requirements and understandings:

1. This is a non-transferable warranty.

2. This product is only warranted in the country of original sale by Burson / authorised dealer.
3. The product must not have been modified in any manner whatsoever, or the warranty is immediately voided.
4. The product must not have been stored in a humid, damp environment; nor subjected to weather, water, or salt spray.
5. During the warranty period, Burson will replace a defective Burson Funk with a similar available product, at no cost to the owner for labour, materials, and shipping charges from Burson.
6. Burson shall not, under any circumstances, be liable for any incidental or consequential damages arising from the loss of property or other damage or losses due to the failure of a Burson Funk. Burson will not pay for loss of use or inconvenience caused by the failure of a Burson Funk. Burson will not pay for damage caused to other audio components caused by the failure of the Burson Funk within the limits allowed by Australian Law.
7. The compatibility between our USB receiver and your computer is dependent on software drivers provided to Burson by the USB chip manufacturer. Therefore Burson cannot guarantee the compatibility of our USB receiver during or after the warranty period.
8. The use of XLR to RCA adaptors will void the warranty.



Warranty Registration