

LINN

KEY FEATURES INCLUDE

- Linn Solo technology uses discrete bipolar design to maximise single channel audio performance
- Powered by Linn Dynamik Switch Mode Power Supply (SMPS)
- Output power 500 W (into 4 Ω)
- Electrical and mechanical isolation between power and audio boards
- Balanced (XLR) and unbalanced (RCA) inputs
- Energy saving automatic signal-sensing circuitry
- Precision-engineered enclosure machined from a single billet of aluminium

Klimax Solo is Linn's reference mono power amplifier, designed to power one single loudspeaker (or drive unit) reliably and efficiently, producing an unparalleled musical performance.

Linn Dynamik Switch Mode Power Supply (SMPS) technology generates stable low-noise power rails for the audio circuitry, with higher mains noise isolation and efficiency than noisy, bulky conventional power supplies.

Cool-running and virtually silent during normal use, Klimax Solo power amplifiers can be combined to improve performance through multi-amping and upgraded all the way to fully Aktiv configuration using matching Klimax Aktiv Crossovers, with a dedicated amplification channel powering each individual loudspeaker drive unit.

Automatic signal-sensing technology detects the presence of an audio signal and minimises power consumption by reverting to sleep mode when inactive, while fault detection and protection mechanisms help safeguard your system against short circuit or excessive load damage.

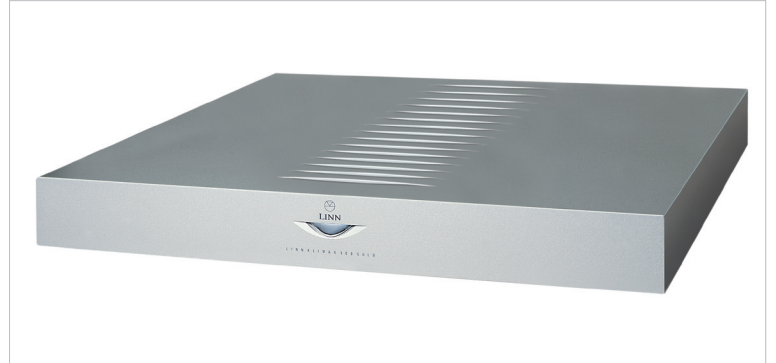
Klimax Solo is housed in a satin-anodised enclosure machined from a single billet of high-grade aluminium and polished to a velvet-touch finish. Separate solid aluminium 'rooms' within the chassis screen and protect the electronics and form a heat exchanger that dissipates the power from the amplifier circuitry.

Offering unsurpassed musical performance from a power amplifier, Klimax Solos complete Linn's finest ever music system and represent the art of audio perfection.

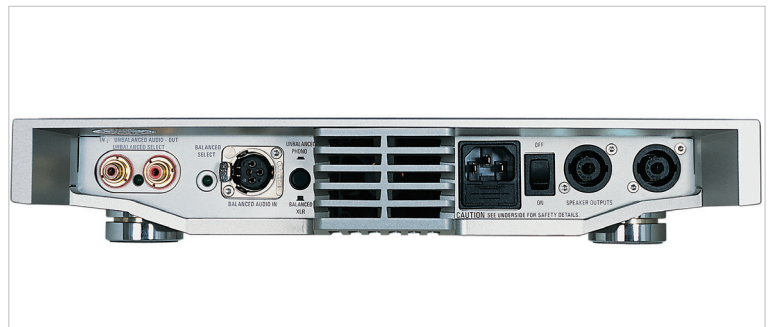
KLIMAX 500 SOLO

OVERVIEW

Reference mono power amplifier



1



2



3

KLIMAX 500 SOLO

TECHNICAL SPECIFICATIONS

Reference mono power amplifier

- Date of introduction May 2011 (original model released 1999)
- Type Reference mono power amplifier
- Dimensions (H) 60 mm x (W) 350 mm x (D) 355 mm
(H) 2.3 inches x (W) 15 inches x (D) 14.2 inches
- Weight 9 kg / 19.8 lb
- Mains supply voltage 100 – 120 V ac ($\pm 10\%$) 50 – 60 Hz
(auto ranging) 200 – 240 V ac ($\pm 10\%$) 50 – 60 Hz
- Fuse 250 V, T6.3 A (not user replaceable)
- Power consumption
 - sleep 13 W
 - active 39 W (typical)
- Output power 500 W into 4 Ω per channel
290 W into 8 Ω per channel
- Maximum input power 1000 W
- Signal sensing threshold > 150 μ V
- Load tolerance Unconditionally stable into all loudspeaker loads
- Peak output voltage 70 V
- Finishes Silver, Black
- Accessories V-klip bracket for wall-mounting

Back Panel Connectors

- Input
 - Unbalanced (switch position in) 1 x RCA phono (WBT)
 - Balanced (switch position out) Balanced XLR
- Output
 - Standard Neutrik Speakon 4-pole connector
 - Optional 4 mm sockets

Input Electrical

- RCA output
 - Input impedance 7k8 Ω
 - Gain 28.6 dB
 - Clipping level 1.67 Vrms
- XLR output
 - Input impedance 7k8 Ω
 - Gain 22.6 dB
 - Clipping level 3.34 Vrms

Audio Performance

- THD+N < 0.02 %
- Frequency Response 2 Hz - 60 kHz (-3 dB)

Linn Products Limited

Glasgow Road, Waterfoot, Eaglesham, Glasgow G76 0EQ, Scotland, UK.

Telephone: +44 (0) 141 307 7777, Facsimile: +44 (0) 141 644 4262, Helpline: 0500 888909, E-mail: helpline@linn.co.uk, Website: www.linn.co.uk

Linn Records Limited

Glasgow Road, Waterfoot, Eaglesham, Glasgow G76 0EQ, Scotland, UK.

Telephone: +44 (0) 141 303 5027, Facsimile: +44 (0) 141 303 5007, Helpline/Mail order: +44 (0) 141 303 5029, E-mail: records@linn.co.uk,

Website: www.linnrecords.com

Copyright © 2011, Linn Products Limited. All rights reserved.

Linn, the Linn logo and all other Linn product names and slogans are trade marks or registered trade marks of Linn Products Limited, registered in at least the UK and/or the EU.

Linn Products Limited disclaims any proprietary interest in trade marks and trade names other than its own. (05/11)