



MARTEN

PRODUCTS



EST  
MADE IN  
SWEDEN  
1998



COLTRANE Tenor 2

## CONTENTS

4	New
6	Coltrane series
12	Marten Isolators
14	Mingus series
20	Parker series
26	Product timeline
28	Oscar series
32	Our story Marten Studio Marten Recordings

*Our range is unified.*

*The current series employs more bespoke elements than previously. Custom-designed drivers offer perfectly tailored, improved performance and with the expansion of Marten Isolators across our range, the level of isolation is exemplary.*

*Through continued design improvement and refinement of components, we've raised the bar again. This year, our line-up is tighter and stronger than ever before.*



NEW

MINGUS  
Quintet 2 <sup>pg 16</sup>

The updated Mingus Quintet 2 has an improved cabinet, wooden tops and bottoms, a new crossover and Marten Isolators, making it the perfect successor to an already proven model.



COLTRANE  
3 <sup>pg 10</sup>

Now with Marten Isolators, our classic goes from strength-to-strength. Tailored to the cabinet of Coltrane 3, Marten Isolators provide an enviable level of isolation from the supporting surface, freeing the soundstage.

COLTRANE  
Tenor 2 <sup>pg 11</sup>

Featuring Marten Isolators, Coltrane Tenor 2 now has the same isolation technology as its bigger brothers. Through precise optimisation, Marten Isolators provide isolation that radically reduces distortion, allowing this model to reach its true potential for openness and clarity.





## COLTRANE Supreme 2

Coltrane Supreme 2 is the prestige model for the Coltrane Series. We wanted to create the ultimate speaker for the home - perhaps the best in the world. Designed using our recording studio in Sweden as reference, the difference between reality and recorded sound is indistinguishable.

The Coltrane series drives many of the design and technology innovations at Marten; Supreme 2 is no exception. It led breakthroughs in our product range and continues to lead the market.

### FEATURES

- 5-way
- Pure Diamond tweeter
- Accuton Cell drivers
- Carbon fibre cabinet
- First order crossover
- Jorma Statement cables
- Marten Isolators

*See technical specifications for finishes*

### STATEMENT

Coltrane Supreme 2 features Jorma Statement internal cables and an improved crossover with higher quality components.

### COLTRANE SERIES

The flagship Coltrane series came to the stage in 2003, establishing Marten as a major player in the high end market, winning many awards along the way.

Coltrane has always led innovation and pushed technology at Marten. It was the first to use Cell drivers by Accuton and the first order crossover we have become famous for. Extremely rigid, Carbon fibre cabinets are crafted with solid wood by Sweden's finest craftsmen.

The Coltrane series is the ultimate reference in sound reproduction, with extreme clarity, speed and resolution; it's uncannily musical even at low volume.

EST  
MADE IN  
SWEDEN  
1998







## COLTRANE Momento 2

Underneath the imposing form of Coltrane Momento 2 lies technology to rival Supreme 2. With enhanced full-picture sound, Coltrane Momento 2 delivers music that sounds just as it did the first time you heard it – and even better than you remember.

Momento 2 uses the bespoke crossover technique developed for Coltrane Supreme 2. The first order crossover makes for absolutely perfect time and phase coherence; and flawless time coincidence.

### FEATURES

- 4-way
- Pure Diamond tweeter
- Accuton Cell drivers
- Carbon fibre cabinet
- First order crossover
- Jorma cables
- Marten Isolators

*See technical specifications for finishes*

### UPGRADE

Coltrane Momento 2 can be upgraded to Statement Edition, featuring Jorma Statement internal cables and higher quality crossover components.



## COLTRANE Coltrane 3

The original Coltrane quickly became a classic when it was launched in 2003; the latest version continues to impress. It has everything that makes a true Coltrane speaker, borrowing design and technology from Supreme 2. It has all the poise and power of its counterparts, in a lounge-friendly cabinet. Now with Marten Isolators it has lower resonance and increased dynamic bass with more power and control.

*See technical specifications for finishes*

### FEATURES

- 3-way bass reflex
- Pure Diamond tweeter
- Accuton Cell drivers
- Carbon fibre cabinet
- First order crossover
- Jorma cables
- Marten Isolators

### UPGRADE

Coltrane 3 can be upgraded to Statement Edition, featuring Jorma Statement internal cables and higher quality crossover components.

## COLTRANE Tenor 2

Coltrane Tenor 2 takes everything it has learnt from its big brothers and packs it into a slimmer form. Its ergonomic cabinets house control and power that you expect from a Coltrane. It's even easier to place in your room, but still delivers true Coltrane sound. The new Marten Isolators offer extreme resonance reduction, maximising its inherent openness and clarity.

*See technical specifications for finishes*

### FEATURES

- 3-way bass reflex
- Pure Diamond tweeter
- Accuton Cell drivers
- Carbon fibre cabinet
- First order crossover
- Jorma cables
- Marten Isolators

### UPGRADE

Coltrane Tenor 2 can be upgraded to Statement Edition, featuring Jorma Statement internal cables and higher quality crossover components.



COLTRANE SERIES



COLTRANE SERIES

## MARTEN Isolators

The reduction of resonance has always been vital to the design of our speakers. With Marten Isolators we've pushed this even further, completely isolating the speaker from the floor, reducing resonance and distortion; leaving the soundstage free.

*"We first developed Marten Isolators for the Coltrane and Mingus series and I was so pleased with the results that I knew we had to use them for the next series. The Parker series has done incredibly well, both critically and with the public. The work we did with IsoAcoustics certainly contributed to its success."* Leif Olofsson, Chief Designer



### PROTECT YOUR SOUND

A key area, for any high-end speaker producer is to minimise distortion and reduce resonance. We have achieved this through cabinet design, the use of precision materials and finely-tuned components. However, each speaker must stand on a floor - this creates its own resonance factors. These distortions are artefacts which muddy the soundstage.

### QUALITY AS STANDARD

We worked with audio isolation leaders IsoAcoustics to create Marten Isolators.

They isolate the speaker from the room by preventing vibrations traveling down to the floor. This means the floor cannot resonate unwanted sound back up into the speaker. With this precision product, the speaker feels completely isolated from the supporting surface, reducing resonance and distortion while eliminating dissonant sounds in the listening area.

### FEATURES

- Dynamic bass with increased power and control
- Natural openness and clarity
- Optimised for cabinet weight
- Resists lateral movement and oscillations
- Reduces internal reflections



## MINGUS Orchestra

The crown jewel of the Mingus series offers the strength and clarity of 51mm and 20mm Diamond drivers. We forged our current design and technology in a beautifully formed Mingus cabinet.

Mingus Orchestra employs our market-leading first order crossover. Combined with Cell drivers from Accuton, this creates flawless time coincidence, as well as perfect time and phase coherence. The result is record-low distortion, delivering the most natural and dynamic sound.

Using the finest components we could find, it is the ultimate expression of our product design philosophy.

### FEATURES

- 4-way bass reflex
- 51mm and 20mm Pure Diamond drivers
- Accuton Cell drivers
- First order crossover
- Carbon fibre cabinet
- Marten Isolators

*See technical specifications for finishes*

### UPGRADE

Mingus Orchestra can be upgraded to Statement Edition, featuring Jorma Statement internal cables and higher quality crossover components.

### MINGUS SERIES

The Mingus series was created to bridge the gap between Coltrane and Heritage, combining crossover and driver technology from the former with design sensibilities that made both series so successful.

Mingus was the first production speaker that Marten created. We reinvented the model into a series, keeping the spirit of the original, but with two decades of design iteration in hand.

Standing astride two iconic series, Mingus proves worthy of both and leads current product design.

EST  
MADE IN  
SWEDEN  
1998





MINGUS  
Quintet 2



EST  
MADE IN  
SWEDEN  
1998





## MINGUS Quintet 2

Mingus Quintet 2 is the essence of a Marten speaker. Full-range, with deep bass and full dynamics; it has all the characteristics.

In its second generation, we improved resonance control two-fold. Extra damping and solid wood top and bottoms make the new cabinet more neutral than before. Marten Isolators further reduce resonance by separating the cabinet from the supporting surface.

The newly designed crossover powers a suite of diamond, ceramic and aluminium sandwich honeycomb drivers.

### FEATURES

- 3-way bass reflex
- Pure Diamond tweeter
- Accuton Cell drivers
- First order crossover
- Jorma cables
- Marten Isolators

*See technical specifications for finishes*

### UPGRADE

Mingus Quintet 2 can be upgraded to Statement Edition, featuring Jorma Statement internal cables and higher quality crossover components.



EST  
MADE IN  
SWEDEN  
1998

## PARKER Quintet

Parker Quintet is a powerful and controlled 2.5-way floorstander, with nine custom drivers and Jorma Design internal cables. The build is our most resonance-free to date, featuring improved cabinet design and new Marten Isolators.

DIAMOND  
Edition

### FEATURES

- Multi-diverse crossover technique
- Passive radiators
- All custom drivers
- Jorma cables
- High sensitivity
- M-board multi-layered cabinet
- Marten Isolators

*See technical specifications for finishes*

### UPGRADE

Parker Quintet can be upgraded to Diamond Edition, featuring a pure Diamond tweeter, Jorma Statement internal cables, more advanced crossover components and improved terminals.

### PARKER SERIES

The Parker series is a step-change in design.

All drivers are custom-designed, allowing us absolute control of the components. The construction is greatly improved making the cabinet almost resonance free, as do the exclusively designed Marten Isolators. What you're left with is a crystal clear soundstage.

The new multi-diverse crossover technique allows these elements to work in absolute harmony. Each model can be upgraded to Diamond edition.





## PARKER Trio

Parker Trio is a 2.5-way floorstander, ideal for your living space. Custom designed drivers work hard with the multi diverse crossover technique to deliver power and control. Parker Trio is powerful and elegant; its resonance-free cabinet blends in with your surroundings, leaving dynamic and crystal clear sound.



### FEATURES

- Multi-diverse crossover technique
- Passive radiators
- All custom drivers
- Jorma cables
- High sensitivity
- M-board multi-layered cabinet
- Marten Isolators

*See technical specifications for finishes*

### UPGRADE

Parker Trio can be upgraded to Diamond Edition, featuring a pure Diamond tweeter, Jorma Statement internal cables, more advanced crossover components and improved terminals.







EST  
MADE IN  
SWEDEN  
1998



## PARKER Duo

Parker Duo is our latest stand speaker. It's 2-way and built on our reputation for outstanding bookshelf models. It's designed for extreme resonance reduction, with all new custom drivers, passive radiators and a superior cabinet design. Delivering sound that is full of power and control, it's optimised for performance in large living spaces.

### FEATURES

- Multi-diverse crossover technique
- Passive radiators
- All custom drivers
- Jorma cables
- High sensitivity
- M-board multi-layered cabinet
- Marten Isolators
- Custom stand (optional)

*See technical specifications for finishes*

### UPGRADE

Parker Duo can be upgraded to Diamond Edition, featuring a pure Diamond tweeter, Jorma Statement internal cables, more advanced crossover components and improved terminals.



## PRODUCT TIMELINE

1998

**Mingus** 2 way floorstander

1999

**Miles** 2.5 way floorstander

2000

**Mingus 2** 2 way floorstander  
**Monk** 2 way stand speaker

2001

**Miles 2** 2.5 way floorstander

2002

**Mingus 3** 2 way floorstander

2003

**Coltrane** 3 way floorstander  
**Miles 3** 2 way floorstander

2004

**Coltrane Alto** 3 way floorstander

2005

**Duke** 2 way stand speaker  
**Ellington** Active bass unit

2006

**Coltrane Supreme** 4 way with active bass towers  
**Swedish Statement** A cost no object system

2007

**Bird** 3 way floorstander

2008

**Form Floor** 2 way floorstander  
**Form Centre** 2 way shelf speaker  
**Form Sub** Active bass unit

2009

**Coltrane Soprano** 2 way floorstander

2010

**Coltrane Momento** 3 way floorstander  
**Getz** 3 way floorstander

2011

**Coltrane 2** 3 way floorstander  
**M.Amp** Mono amplifier

2012

**Django XL** 3 way floorstander  
**Bird 2** 3 way floorstander  
**Getz 2** 3 way floorstander  
**Miles 5** 2 way floorstander  
**Duke 2** 2 way stand speaker

2013

**Coltrane Tenor** 3 way floorstander  
**Django L** 3 way floorstander

2014

**Coltrane Supreme 2** 5 way floorstander +passive radiators  
**Supreme Sessions 1** CD, recorded at Marten studios

2015

**Coltrane 3** 3 way floorstander

2016

**Mingus Quintet** 3 way floorstander  
**Supreme Sessions 2** CD, recorded at Marten studios  
**Supreme Sessions 1 & 2** First vinyl albums

2017

**Coltrane Tenor 2** 3 way floorstander

2018

**Coltrane Momento 2** 4 way floorstander +passive radiators  
**Mingus Twenty** 3 way floorstander

2019

**Mingus Orchestra** 4 way floorstander  
**Oscar Trio** 3 way floorstander  
**Oscar Duo** 2 way stand speaker

2020

**Parker Quintet** 2.5 way floorstander  
**Parker Trio** 2.5 way floorstander  
**Parker Duo** 2 way stand speaker

2022

**Mingus Quintet 2** 3 way bass reflex





## OSCAR Trio

Oscar Trio is a defining moment - the same Marten sound in a new build. Our chief designer Leif Olofsson crafted new technology to achieve the same performance that we've built our name on.

Innovation drove the creation of Oscar Trio; understanding challenge, taking risks and rethinking design are the ashes from which Oscar Trio was born.

### FEATURES

- Custom designed drivers
- True Marten sound
- 2-way
- Competitive price-point
- Magnetic cover (optional)

*See technical specifications for finishes*



### OSCAR SERIES

The Oscar series was created to meet the demand for a reasonably-priced Marten speaker, without sacrifice to our renowned sound and quality. To achieve this we went back to the drawing board. To keep the same Marten sound we designed a brand new driver, allowing more control of the details and the ability to re-design the build.



## OSCAR Duo

Built from the ground-up, Oscar Duo sparked a design rethink to deliver Marten sound with new technology - bespoke drivers were created to make this possible. And that's not the only thing that is custom, the optional stand is a Marten original too.



### FEATURES

- Custom designed drivers
- True Marten sound
- 2-way
- Competitive price-point
- Custom stand (optional)
- Magnetic cover (optional)

*See technical specifications for finishes*





## OUR STORY

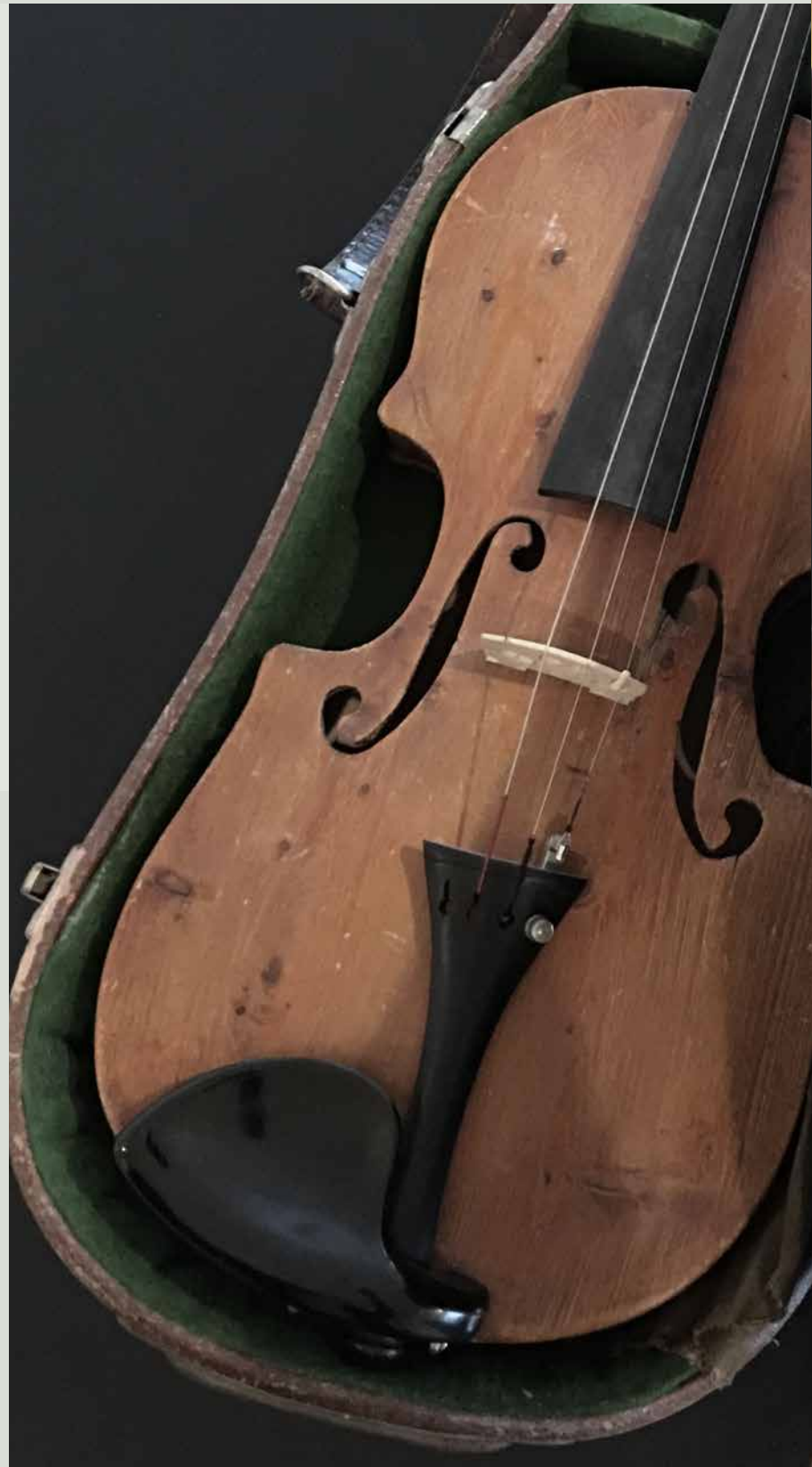
In 1998, Marten was founded by Leif Mårten Olofsson in Sweden.

At the age of 12, Leif prototyped loudspeakers in the family garage. It was more than a passion; it was his calling in life.

Music was a part of life for generations of Olofssons.

In the early 1900's, in the quiet town of Lidköping, Leif's grandfather Josef Olofsson built violins using Stradivarius as a benchmark. An instrument that was played by Mårten Larsson: his maternal grandfather who the company is named after.

Today, the company is still a family business run by Leif and his brothers, Jörgen and Lars.



## MARTEN STUDIO

A love of music has always driven the design of Marten speakers - we want to deliver music as it was recorded.

In the Summer of 2013, we created our own recording studio and brought live music to our offices in Sweden.

With reference model, Coltrane Supreme 2 in mind, we designed a dual microphone studio. Marten's first recording album, Supreme Sessions, closed the loop between live music and the home listening experience.

Supreme 2 was the first speaker to use Cell drivers combined with a first order crossover, leading a new direction in Marten's design strategy. The recording studio was key to development of the design process.

## MARTEN RECORDINGS

Our own studio has allowed us to produce high-fidelity recordings, for release on our own record label Marten Recordings.

We have released several albums, working with talented artists such as Rhythm Art Duo, Matti Ollikainen and Duo Granmo Berg. All were recorded in our state-of-the-art, dual microphone studio in Gothenburg, Sweden.

Buy recordings at [martenshop.com](http://martenshop.com)





*“Design is not a destination. We are always looking at how we can improve and refine our products. Our current range is as good as it’s ever been, but that doesn’t mean we’re finished.”*

*Leif Olofsson*

Leif Olofsson | Chief Designer, Marten



MINGUS Quintet 2





MARTEN

Find out more at [marten.se](https://www.marten.se)

Marten  
Flöjelbergsgatan 18  
431 37 Mölndal  
Sweden

Tel +46 31 20 72 00  
[info@marten.se](mailto:info@marten.se)  
[facebook.com/martenspeakers](https://facebook.com/martenspeakers)  
[instagram.com/martenspeakers](https://instagram.com/martenspeakers)  
[youtube.com/martenspeakers](https://youtube.com/martenspeakers)

EST  
**MADE IN  
SWEDEN**  
1998